

Wi-Fi 6 IoT Gateway

Duo-AP

Duo-LT

Package Contents*

1. Duo-LT (HaLow™ only) and Duo-AP (LTE and HaLow™) Wi-Fi 6 IoT Gateway
2. External antennas (3 for Duo-AP and 1 for Duo-LT)
3. Mounting bracket accessory
4. Mounting bracket security screw
5. Screw kit—4 screws and 4 plugs
6. (Optional) Pole-mount kit—1 bracket and 2 steel-band hose clamps
7. QR code card

*Does not ship with AC power adapter



Overview

1. Restart/reset button:

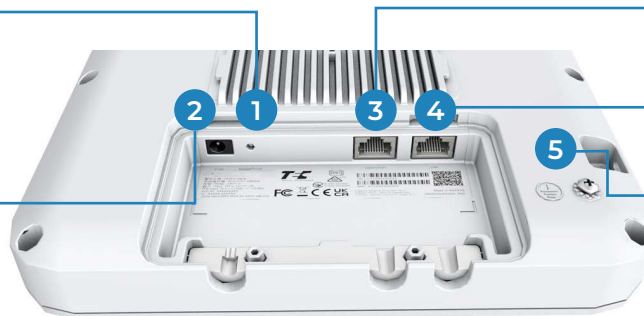
- A quick press restarts the system.
- Press and hold for 5 seconds resets to factory defaults.

2. 12V DC power input

3. WAN/Uplink (PoE) Port:
10/100/1000BASE-T,
802.3at PoE

4. LAN Port:
10/100/1000BASE-T

5. Ground screw



6. System LED Indicators:

- (Left) Green:
On (power/Wi-Fi OK),
Blinking (Wi-Fi traffic)
- (Center) Blue:
On (LTE), blinking
(LTE traffic)
- (Right) Orange:
On (HaLow™), blinking
(HaLow™ traffic)

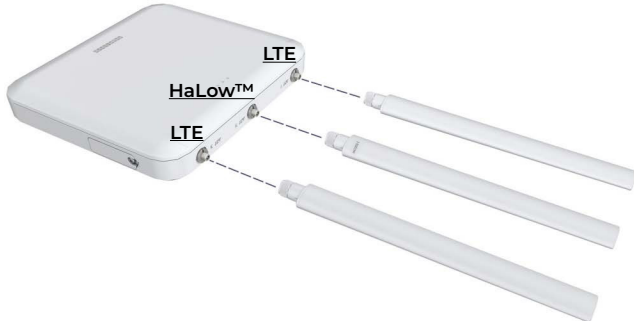
7. SIM card slot access panel

8. External antenna connectors (3 for Duo-AP and 1 for Duo-LT)



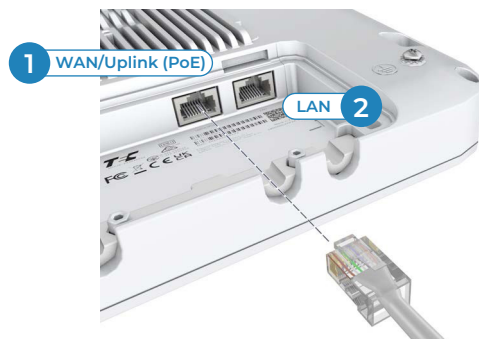
Installation

1. Install External Antennas



Attach the external antennas to the connectors on the AP, per above diagram.

2A. Connect LAN Cables



1. Connect Category 5e or better cable to the WAN/Uplink (PoE) 1000BASE-T RJ-45 port. When connected to a PoE source, the WAN/Uplink (PoE) port connection provides power to the unit.

2. (Optional) Connect a local LAN switch or computer to the LAN 1000BASE-T RJ-45 port.

(Optional) 2B. Connect AC Power Adapter Cables



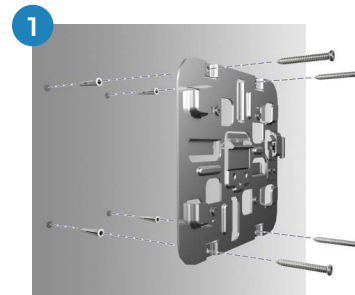
When not connected to a PoE source, connect the AC power adapter to the DC power jack on the AP and then plug the adapter into a nearby AC power source.

3. Check the System LEDs



When operating normally, the green, blue, and orange LEDs should be on. Blinking LEDs indicate network activity.

4A. Mounting the AP on a Wall



1. At the installation location on the wall, use the mounting bracket to mark four holes for the wall plugs and screws (included in the screw kit).

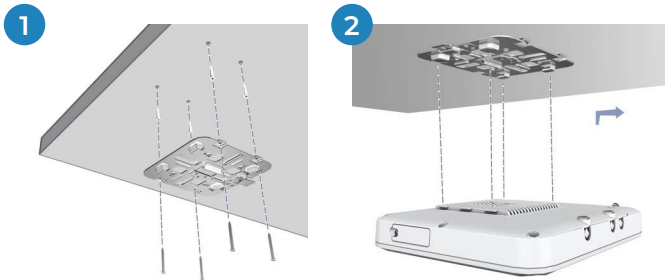
Drill four holes for the wall plugs, and then insert the plugs and tap them flush with the wall surface.

! **Note:** Drill 2.5 mm (±0.2 mm) holes for M3 self-tapping screws, or 4.5 mm (±0.2 mm) holes for nylon wall plugs.



2. Use the four screws to secure the bracket to the wall. With its ports facing down, place the AP over the bracket flanges and then slide it down until it snaps into its secured position.

4B. Mounting on the Ceiling without T-bars



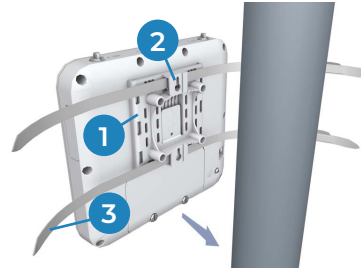
1. At the installation location on the ceiling, use the mounting bracket to mark four holes for the plugs and screws (included in the screw kit).

Drill four holes for the plugs, and then insert the plugs and tap them flush with the ceiling surface.

Use the four screws to secure the bracket to the ceiling (screw torque must be less than 6 kgf.cm).

2. Place the AP over the bracket flanges and then slide it onto the bracket until it snaps into its secured position.

(Optional) 4C. Mounting on a Pole (Max. 2.5 inch diameter)



1. Slide the pole-mount bracket onto the base of the AP until it clicks into its locked position.

2. Feed the two steel-band clamps through the pole-mount bracket mounting points.

3. Fasten the steel-band clamps around the pole to secure the AP to the pole.